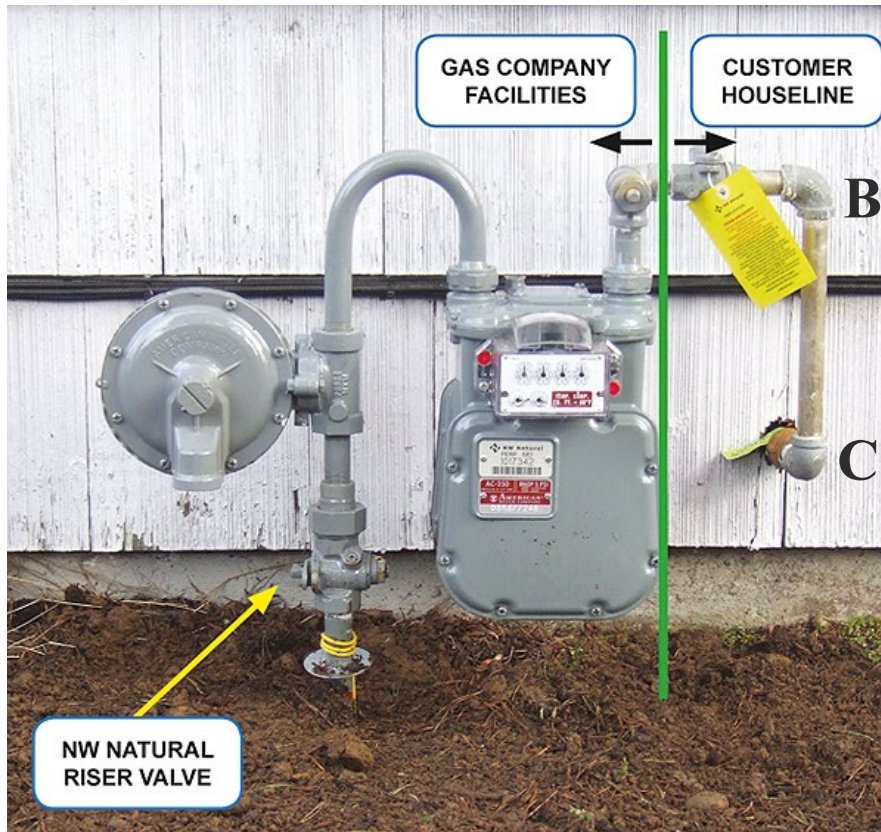




Tie-in of additional gas line to meter



Place Tee at either B or C for pool or Spa Tie-in

When it is necessary to tie-in additional house or yard line to outlet side of meter, the following methods should be used:

1. The "Tee" fitting labeled "A" is NOT to be used for tie-in. The gas company has a specific use for this "Tee".
2. The "ELL" fitting labeled "B" can be substituted with a "Tee", for tie-in.
3. The "ELL" fitting labeled "C" can be substituted with a "Tee". This is probably the most practical place to tie-in.
4. Install sediment trap between "A" and "B" or at "C".